



WINDOW + DOOR
REPLACEMENT
SOLUTIONS

IDEAS





Ultimate Casement and Picture window

IMAGINE THE POSSIBILITIES

Whether big or small, a replacement project can be an opportunity to bring new life to your home. Use this book to explore the creative ways replacing your windows and doors can transform a room and inspire new design ideas.

CUSTOM FINISHES



Elevate Double Hung windows with Designer Black sash and Pre-finished White frame

ELEVATE

MARVIN ELEVATE® COLLECTION

MIXED FINISHES
OFFER A TRULY
CUSTOM LOOK

CHALLENGE

A matching frame and sash simply won't do for the style of a space and the impact the windows should-or shouldn't-have in the room.

SOLUTION

Featuring a beautiful wood interior and resilient fiberglass exterior, the **Marvin Elevate** collection offers the option to select different finishes on the frame and sash of the window. With Elevate mixed finishes, there are even more ways to customize a space—from bold contrast that makes the window the focal point to a monochromatic look that fades out of sight. This design flexibility allows homeowners to mix and match three factory finish options on their Marvin Elevate windows, including Clear Coat over pine, Designer Black, and Pre-finished White. Windows arrive finished or painted and ready to install with the consistent quality and aesthetics that come from a carefully perfected factory-finishing process. Windows and doors ordered with a bare pine interior can be custom stained on site for even more unique and custom designs.

Trends come and go, but homeowners will always seek personal touches that are a reflection of their style. Mixing finishes offers a new look for window styles, and a factory-applied finish makes it easier than ever to achieve.



Elevate Double Hung windows with Clear Coat sash and Pre-finished White frame

Pre-finished White frame

Clear Coat sash



Elevate Double Hung windows with Clear Coat sash and Pre-finished White frame

DESIGN TIP

Choose high contrast finishes—like a white frame with black sash—to make a window a featured focal point.



Elevate Double Hung windows with Designer Black sash and Pre-finished White frame

Pre-finished White frame

Designer Black sash

SAFETY WITH STYLE

Ultimate Casement and Picture
windows and Sliding Patio Door.

ULTIMATE

MARVIN SIGNATURE® COLLECTION

MARVIN WINDOWS WITH **CONCEALED** **SECURITY SENSORS** BRING PEACE OF MIND AND DESIGN TO A RIVERSIDE HOME

CHALLENGE

When the owners of this riverside home in Northern Minnesota decided to renovate, they made their home's security a priority. However, they worried that window security technology would compromise design and performance since most security sensors are visible on the sash or frame.

SOLUTION

They decided to incorporate Marvin's Lock Status Sensor into their new windows. Since components are hidden within the window frame, there is no impact to the design, allowing the owners to achieve the style they wanted. Installers appreciate that the windows come equipped with the necessary wiring for easy installation. The sensor integrates seamlessly with new or existing security systems through wired or wireless connections and allows for upgrades as technology evolves.



Ultimate Casement and Picture windows
and Inswing French door



DESIGN TIP

Connect your security sensors with leading third-party home automation and service providers.



PRESERVE TRADITION



Ultimate Double Hung G2 Round Top windows

ULTIMATE

MARVIN SIGNATURE® COLLECTION

MARVIN ULTIMATE
DOUBLE HUNG
G2 ROUND TOP
WINDOWS RECLAIM
THE TRADITIONAL
WINDOW DESIGN
OF THIS CHICAGO
LOCATION

CHALLENGE

At this Chicago building, three round-top windows were blemishes on an otherwise beautiful space. The windows, which look out to a second-floor patio, were old and weathered with chipped paint. The owners wanted not only to restore the windows to their original glory—they needed the material to hold up against the city's brutal weather conditions.

SOLUTION

Replacing the windows with three Marvin Ultimate Double Hung G2 Round Top windows was the ideal solution. The Bronze aluminum clad on the exterior of the windows provided the durability and protection the owners desired while matching the style of the original historic windows and preserving the character of the building.

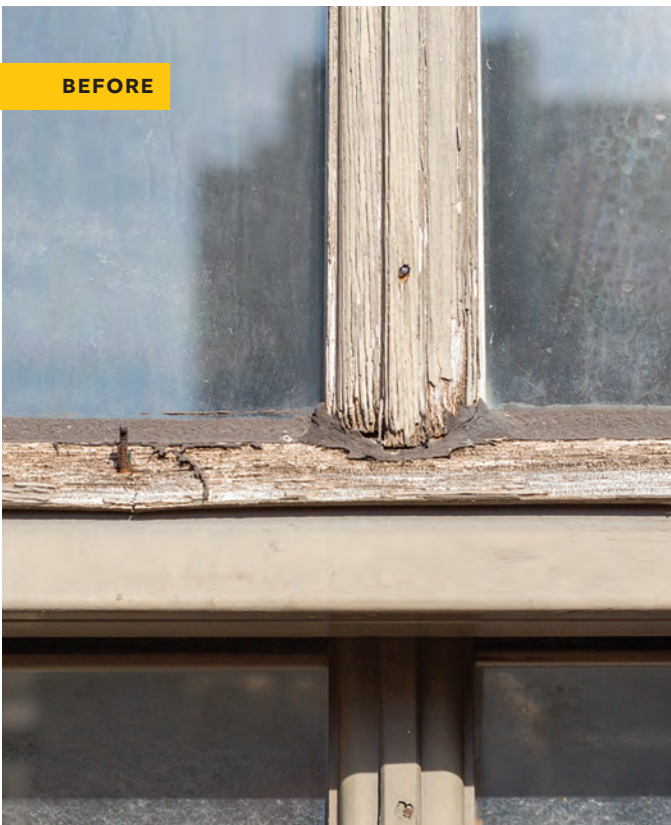
BEFORE



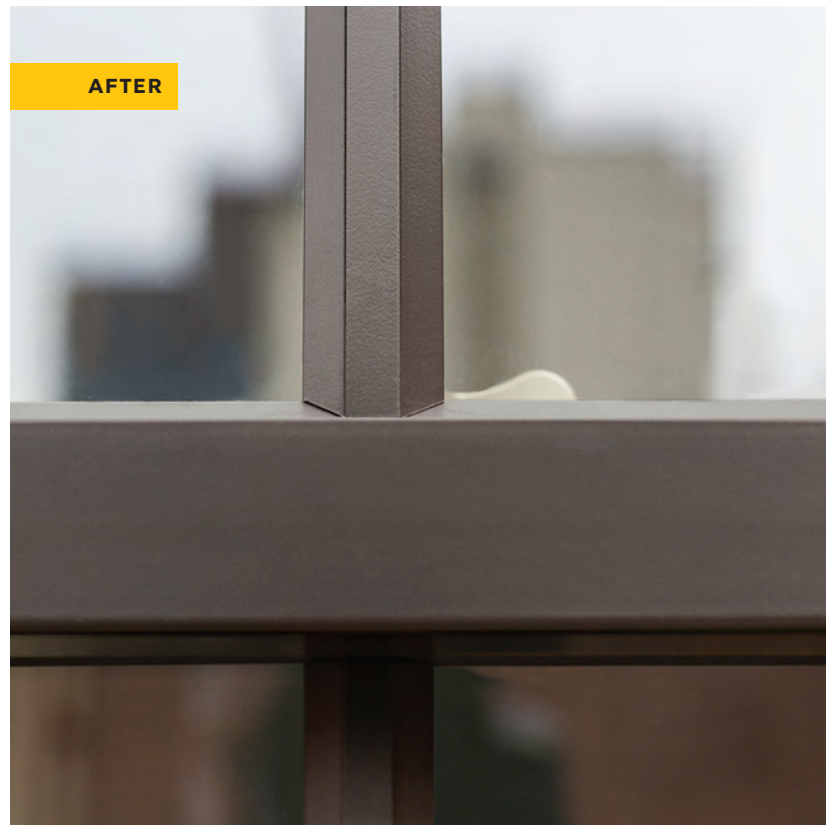
AFTER



BEFORE



AFTER





DESIGN TIP

Choosing extruded aluminum exteriors for your windows provides a low-maintenance option that is less susceptible to weathering. Extruded aluminum is an extremely tough cladding that protects wood windows and provides superior durability. It can be formed to match original details and requires no repainting, so you won't have to worry about any chipped paint.



BEAUTY WITH STRENGTH



Elevate Double Hung windows and Inswing French doors with swinging screens

ELEVATE

MARVIN ELEVATE® COLLECTION

MARVIN WINDOWS
HELP A LONG ISLAND
HOME STAND UP TO
EXTREME WEATHER
CONDITIONS WITHOUT
COMPROMISING
ITS DESIGN

CHALLENGE

The owners of this Long Island 1940s colonial home worried their windows and doors weren't durable enough to withstand the region's extreme weather conditions. Finding something that could hold up to the strong winds of the northeast coastal climate while enhancing the beauty of the home was a top priority.

SOLUTION

Made with Ultrex®, a Marvin-exclusive fiberglass that outperforms and outlasts vinyl and other composites, **Marvin Elevate windows and doors** can endure all elements without showing age or wear. The versatility in design options also gave them the style they desired while bringing in more natural light and warmth to interior spaces.



Elevate Double Hung windows



Elevate Inswing French doors with swinging screens

DESIGN TIP

Choosing a white interior color for your windows helps accentuate the natural light from outside.



Elevate Casement and Picture windows

ADMIRE EFFICIENCY



Elevate Casement and Awning windows and Ultimate Double Hung G2 windows

ULTIMATE | ELEVATE

MARVIN SIGNATURE® COLLECTION | MARVIN ELEVATE® COLLECTION

MARVIN WINDOWS MAKE A BOLD STATEMENT WHILE PRESERVING ENERGY IN A COTTAGE HOME

CHALLENGE

The owners of this 1920s 1,000-square-foot cottage knew they'd need to do extensive renovations, including reworking the floor plan and enlarging the house to accommodate their family. At the same time, they wanted to keep the house recognizable as a Jamestown shingled cottage.

Since one of the family members is an architect that designs sustainable-community projects, energy efficiency was paramount. They set a goal of making the house a Net Zero home—a building standard that dictates that a house use only as much energy as it can produce.

SOLUTION

To ensure the house would use as little energy as possible, the family chose triple-glazed, argon-filled windows that provide the energy efficiency they wanted. With their Designer Black exteriors, the **Elevate Casement and Awning windows** and **Ultimate Double Hung G2 windows** not only work hard at preserving energy, they also make a beautiful style statement that aligns with Jamestown's distinctive look.

To preserve energy throughout the home, builders lined the existing foundation and slab with a combination of rigid mineral-wood panels and rigid foam panels. Photovoltaic solar panels and a heat-recovery HVAC system supply the needed energy while layers of insulation, ENERGY STAR® appliances, and LED lighting keep energy use low.

AFTER



Elevate Casement and Ultimate Double Hung G2 windows

Photo: Anthony Tieuli

BEFORE



Photo: Anthony Tieuli

DESIGN TIP

Make a unique style statement that matches your design needs—both indoors and out. These windows pair Designer Black exteriors and black interior sash with white interior trim.



REFRESHED AESTHETICS



Ultimate Double Hung G2 windows

ULTIMATE

MARVIN SIGNATURE® COLLECTION

ULTIMATE DOUBLE HUNG G2 WINDOWS BRING NEW LIFE TO AN OLD HOME

CHALLENGE

When buying an older home, owners often have to make a few upgrades. This Chicago home needed all windows replaced due to deterioration.

SOLUTION

Ultimate Double Hung G2 windows with divided lites helped bring the home back to life. The Pre-finished White and Designer Black painted interior finish and Ebony aluminum clad exterior provided a much needed style upgrade that stayed true to the style of the home while bringing it into a new era.

BEFORE



AFTER



DESIGN TIP

A window replacement project can be an opportunity to reimagine a space. Updating the style of the original windows can bring fresh character to the design of your home.



DESIGN TIP

Mixing and matching the finish colors on your window interiors can add layers of style and personalization to your spaces. A Designer Black window sash provides a contemporary contrast to jamb extensions painted white to match trim.





DOWNLOAD ADDITIONAL
REPLACEMENT MATERIALS AT
[MARVIN.COM/REPLACEMENT](https://marvin.com/replacement)



At Marvin, our focus is on creating long-lasting windows and doors that are just right for your unique home.

We understand and appreciate the investment you are making, and we work hard to ensure that replacing your windows and doors with us is a rewarding experience.

Thank you for considering Marvin for your project. We look forward to working together.

[MARVIN.COM/REPLACEMENT](https://marvin.com/replacement)

©2022 Marvin Lumber and Cedar Co., LLC. All rights reserved.
®Registered trademark of Marvin Lumber and Cedar Co., LLC.
ENERGY STAR® and the ENERGY STAR certification mark are registered US marks.

Cover Photo: Anthony Tieuli

Part #19983034. May 2022.

Colors shown in printed materials are simulations and may not precisely duplicate product or finish colors. Contact your local Marvin dealer to view actual product and finish color samples.

NEED MORE DESIGN IDEAS?

Check out our Instagram or visit our Pinterest inspiration boards.

Instagram: [@TheMarvinBrand](https://www.instagram.com/TheMarvinBrand)

Pinterest: pinterest.com/TheMarvinBrand