

— ULTREX® FIBERGLASS

Glass Performance Options

INFINITY®

from MARVIN®
REPLACEMENT WINDOWS

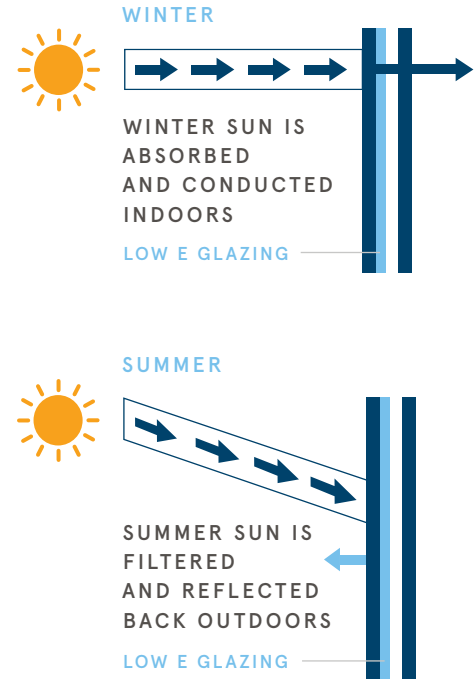
Built for life®



Which glass performance factors should I evaluate?

Key performance factors

- **U-Factor:** U-factor measures how well a window keeps heat inside your home. A higher number allows more heat to escape; a lower number allows less heat to escape. If you live in a colder climate, you'll want to look for a low U-factor.
- **Solar Heat Gain Coefficient (SHGC):** The SHGC measures how much heat from the sun enters your home. The lower the number, the less heat the window lets in. You want a lower SHGC if you have high cooling costs in the summer; a higher SHGC can help warm a home in a colder climate during the winter.
- **Visible Transmittance (VT):** Visible Transmittance measures the amount of visible light that passes through a window. A high VT maximizes daylight.




GLASS GLAZING

Maximizing energy efficiency.

Low E insulating glass coating options


Extremely thin coatings of special low emissivity (Low E) metallic material are applied to glass panes to boost their energy efficiency and block out UV rays. Since glass choice plays a big factor in window and door efficiency, your local Infinity partner can provide recommendations on the best selection for your home.

Low E2 glass is 56% more energy efficient in the summer and 49% more energy efficient in the winter*. Low E3 glass is 70% more energy efficient in the summer and 49% more energy efficient in the winter.*

Low E1 


Low U-Factor
High solar heat gain

Primarily used in colder climates, Low E1 allows more heat in to warm a room while blocking heat loss.

Low E2 


Low U-Factor
Medium solar heat gain

Low E2 offers year-round performance in moderate climates. It will help retain heat in your home during the winter and keep heat out during the summer. It also blocks 84% of the sun's UV rays to reduce fading.

Low E3 

Low U-Factor
Lower solar heat gain

Low E3 rejects solar heat while letting light in, resulting in increased performance in climates with intense sun exposure. It also blocks up to 95% of the sun's damaging UV rays.

Low E3/ERS 

Superior U-Factor
Lower solar heat gain

With an extra metallic layer on the room-side glass to reflect escaping heat back into the room, Low E3/ERS provides maximum efficiency year round in all conditions.

SPECIALTY GLASS

Performance options that pass the test.



01

Tempered Glass

Increases glass strength to help prevent breakage. This option is ideal for windows that are close to the floor or located in high-traffic areas.

02

Laminated Glass

Even more durable than tempered glass, laminated glass is often referred to as impact resistant or safety glass due to its vinyl interlayer that tends to remain in place when cracked.

03

STC/OITC Glass

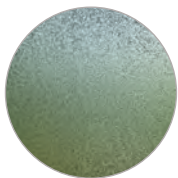
Sound Transmission Class and Outdoor-Indoor Transmission Class Glass has increased pane thickness, ideal in areas where exterior noise is a concern.

DECORATIVE GLASS

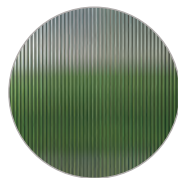
Adding extra light to a private space.

Decorative glass options

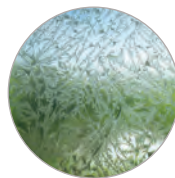
Add light and style to your home while preserving privacy with Infinity's decorative glass options.



OBSCURE



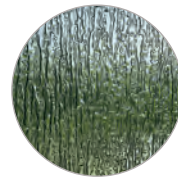
NARROW REED



GLUE CHIP



REED



RAIN



FROST

*Values are based on comparison of Infinity® from Marvin® double-hung window U-Factor to the U-Factor for clear dual pane glass non-metal frame default values from the 2018 International Energy Conservation Code "Glazed Fenestration" Default Tables.

Still curious about glass? We can help.

Choosing the right glass for your replacement project can seem challenging.

We know replacing your windows and doors is an investment of your time and money, and our local independent partners are ready to help.

Thank you for considering Infinity from Marvin for your home.

Call 1-888-206-1332 for the Infinity from Marvin local independent partner nearest you. In Canada, call 1-800-263-6161. Or visit us at infinitywindows.com.

MADE IN AMERICA 

©2019 Marvin® Lumber and Cedar Co., LLC. All rights reserved.
®Registered trademark of Marvin Lumber and Cedar Co., LLC.

Part #19981950. July 2019.

INFINITY
from **MARVIN**

REPLACEMENT WINDOWS

Built for life®