

M-85 Series

Commercial Single-Hung (side load), Horizontal Slider & Fixed

2¹¹/₁₆" Frame Depth



Quality Windows & Doors for All Seasons

**Performance and efficiency
in a cost-effective choice for
new construction and renovation**



Ten at Clarendon in Arlington, VA
M-85 Series Horizontal Slider & Fixed Windows

Product Performance Details (AAMA/WDMA/CSA 101/I.S.2/A440-♦)

Type	AAMA Class at Gateway Size ♥♥	Structural/ Water/Air Test Size (W x H)	Air Infiltration (cfm/sq ft)	Water Resistance (psf)	Deflection (psf)	Structural ^ (psf)
Single-Hung	CW30	56"W x 91"H	0.01 @ 1.6 psf	4.60	30	45
	optional: CW50	52"W x 81"H		7.52	50	75
Horizontal Slider Single Vent (XO)	LC25	72"W x 60"H	0.18 @ 1.6 psf	3.76	25	37.5
	optional: CW30			4.60	30	45
Horizontal Slider with subsill Single Vent (XO)	CW35	72"W x 60"H	0.12 @ 1.6 psf	5.43	35	52.5
	optional: C50			7.52	50	75
Fixed <i>Hurricane-Impact Also Available!</i>	CW30	60"W x 72"H	<.01 @ 1.57 psf	4.60	30	45
	optional: C50		<.01 @ 1.6 psf	7.52	50	75
	optional: C65		<.01 @ 1.57 psf	9.82	65	97.5

♦ The '05 fenestration standard utilized five performance classes - R, LC, C, HC and AW. NAFS-08 and -11 utilize four such classes - R, LC, CW and AW.

♥ Many window ratings can be increased by downsizing the window and determining maximum performance either through testing or calculation. Contact your local Wojan Sales Representative or our office for additional details.

^ This is an intentional overload aspect to window performance testing and should not be used in lieu of the window DP (Design Pressure) when evaluating a product for a specific project or use.

Fixed over Louver configuration offers the same product designations and performance values (window only) as M-85 Fixed based on the M-85 Fixed AAMA101 Report.

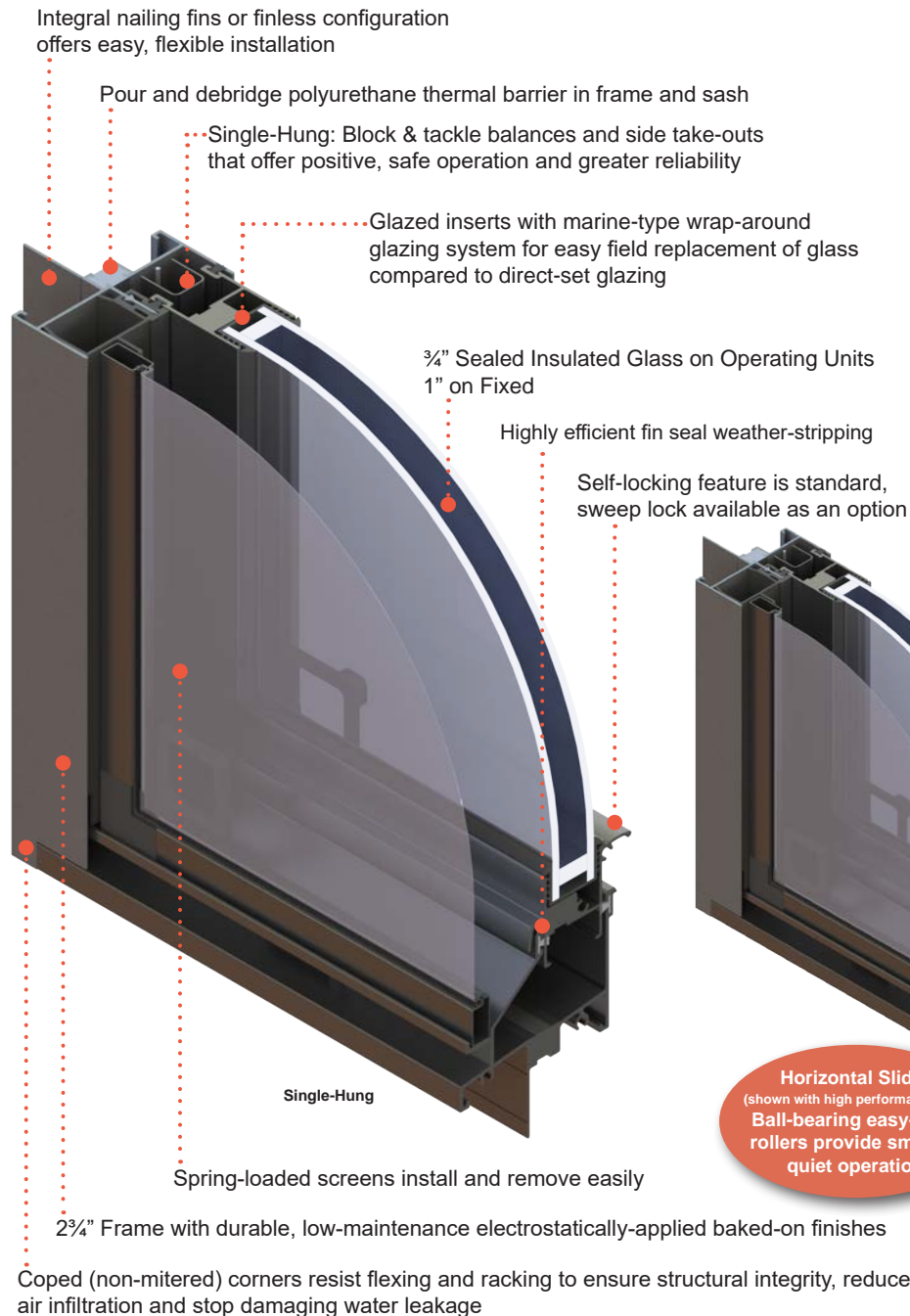


Made in the U.S.A.



Proud Member

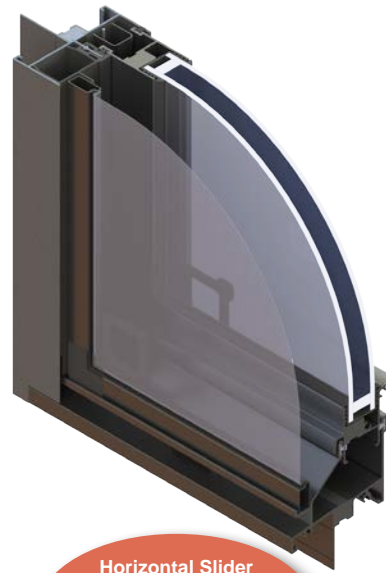
Cross-Sections and Additional Features



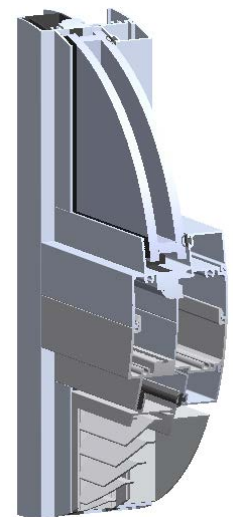
- Commercial-grade aluminum extrusions offer strength with a solid, attractive appearance
- Custom installation accessories including receptors and subsills, face flange, nail fins, panning, snap trim and mullions
- Aluminum screen frame with fiberglass cloth standard - optional aluminum cloth
- Ergonomically designed lift and pull rails on operable sash
- Standard finishes include white or bronze (AAMA 2603); and clear or dark bronze anodized (AAMA 611). White or bronze 2-coat Kynar® (AAMA 2605) available with minimum order

Other non-standard colors with minimum order

(Kynar® is a registered trademark of Arkema Inc.)
(Azo-Brader™ is a trademark of Azon USA Inc.)

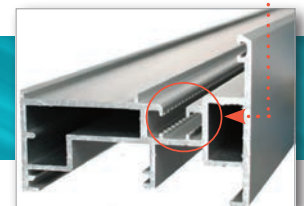


Horizontal Slider
(shown with high performance sill):
Ball-bearing easy-glide rollers provide smooth, quiet operation



Fixed over Louver
configuration is factory stacked with an integral nailing fin in one master frame

Azo-Brader™ Technology:
Abrasion "hooks" displace metal along the lugs to improve adhesion in the thermal barrier pocket.



Our products feature a pour and debridge polyurethane thermal break for better performance, utilizing Azo-Brader™ technology with a 10-year pass-through warranty against failure of the polymer.

HQ/Sales/Manufacturing
217 Stover Road
Charlevoix, MI 49720
fax (231) 547-4237

WOJAN
WINDOW & DOOR
CORPORATION
www.wojan.com
(800) 632-9827

Manufacturing
340 Jay Street
Coldwater, MI 49038
fax (517) 279-9832