

# M1500 Series Double-Hung Tilt Window CW30/C50 Ratings with a 3¼" Frame



Wojan's M1500 Series Double-Hung Tilt Aluminum Window is designed for a wide range of applications. Its versatility and a vast array of available options make this suitable for replacement and new construction on building types ranging from apartments to commercial projects.



## Product Performance Details (AAMA/WDMA/CSA 101/I.S.2/A440-05)

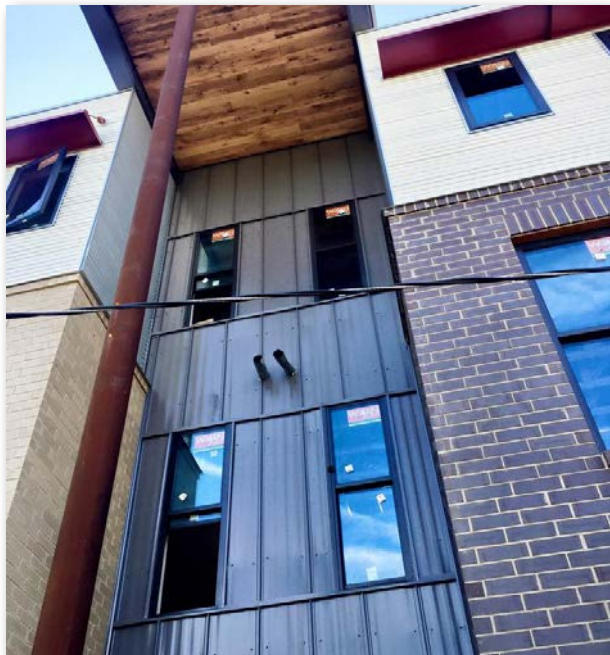
Model	Product Designation ♦ ♥	Structural/ Water/Air Test Size (W x H)	Air Infiltration (cfm/sq ft)	Water Resistance (psf)	Deflection (psf)	Structural <sup>^</sup> (psf)
M1500	CW30	56"W x 91"H	0.17 @ 1.57 psf	4.59	30	45
	optional: C50			7.52	50	75
Fixed	AW40	60"W x 99"H	0.17 @ 1.57 psf	8.15	40	60
	optional: AW80			12.11	80	120

♦ The '05 fenestration standard utilized five performance classes - R, LC, C, HC and AW. NAFS-08 and -11 utilize four such classes - R, LC, CW and AW.

♥ Many window ratings can be increased by downsizing the window and determining maximum performance either through testing or calculation.

<sup>^</sup> This is an intentional overload aspect to window performance testing and should not be used in lieu of the window DP (Design Pressure) when evaluating a product for a specific project or use.

- Step jamb design results in greater resistance to air infiltration
- Interlock meeting rails for a weather tight seal
- Equal sight lines top and bottom sash for more viewing area
- Block and tackle balances for smooth, easy operation
- Tilt latches allow sashes to be tilted inward for easy cleaning
- Dual weatherstripping creates an energy efficient, virtually weather tight seal
- Custom sized - no matrix
- Marine glazed system; easily reglazed
- Numerous installation accessories including nail fin, face flange, strap anchors and receptors
- Standard finishes include white and bronze (AAMA 2603)  
*custom finishes available with minimum order*



Dual accessory channels

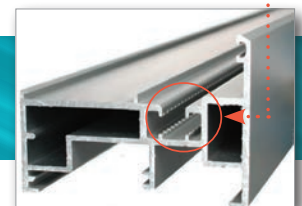
7/8" Sealed insulated glass with a 10-year warranty. Multiple glass options available.

Standard auto lock(s) at the top sash, optional auto-lock at the sill

Aluminum 3 1/4" Frame

Sloped sill with dual weather seals results in a 7.5 psf water test

**Azo-Brader™ Technology:**  
Abrasion "hooks" displace metal along the lugs to improve adhesion in the thermal barrier pocket.



*Our products feature a pour and debridge polyurethane thermal break for better performance, utilizing Azo-Brader™ technology with a 10-year pass-through warranty against failure of the polymer.*

HQ/Sales/Manufacturing  
217 Stover Road  
Charlevoix, MI 49720  
fax (231) 547-4237



Made in the U.S.A.



(800) 632-9827  
[www.wojan.com](http://www.wojan.com)



Manufacturing  
340 Jay Street  
Coldwater, MI 49038  
fax (517) 279-9832