

4500/4600 Series Windows

Commercial Aluminum Hopper, Awning, Casement & Fixed



Quality Windows & Doors for All Seasons

All models AAMA rated AW
Specifically designed for commercial
and architectural applications



Product Performance Details (AAMA/WDMA/CSA 101/I.S.2/A440-♦)

Type	Product Designation ♦♦	Structural/Water/Air Test Size (W x H)	Air Infiltration (cfm/sq ft)	Water Resistance (psf)	Deflection (psf)	Structural ^ (psf)
4500 Fixed <i>Blast Also Available!</i>	AW40	60"W x 99"H	< 0.01 @ 6.27 psf	8.15	40	60
	optional: AW100			12.11	100	150
4500 Project-In Hopper	AW40	60"W x 36"H	0.08 @ 6.27 psf	8.15	40	60
	optional: AW70			12.11	70	105
	optional: AW90			12.11	90	135
4600 Project-Out Casement <i>Blast Also Available!</i>	AW40	36"W x 60"H	0.05 @ 6.27 psf	8.15	40	60
	optional: AW70			12.11	70	105
4600 Project-Out Awning <i>Blast Also Available!</i>	AW40	60"W x 36"H	0.03 @ 6.27 psf	8.15	40	60
	optional: AW65			12.11	65	97.5
4600 Project-Out Awning with Roto Operator § <i>ADA Compliant Option Available</i>	AW40	60"W x 36"H	0.01 @ 6.27 psf	8.15	40	60

♦ The '05 fenestration standard utilized five performance classes - R, LC, C, HC and AW. NAFS-08 and -11 utilize four such classes - R, LC, CW and AW.

♦ Many window ratings can be increased by downsizing the window and determining maximum performance either through testing or calculation. Contact your local Wojan sales representative for details.

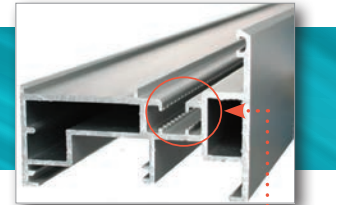
^ This is an intentional overload aspect to window performance testing and should not be used in lieu of the window DP (Design Pressure) when evaluating a product for a specific project or use.

§ ADA Compliant option per AAMA 513-12 with an average operating force of less than 5 lbf for lock handles and operator. All testing based on AAMA 513-12 without air, water and structural allowances or reductions; but including sampling, test equipment and methodology qualifications.

4500/4600 Series Features

- High Quality 1" Sealed Insulated Glass: Numerous options available including Low-E, tinted, obscure, tempered, laminated, argon-filled and spandrel
- Integral Mulling/Stacking System: Provides an unlimited selection of multi-window configurations within a single master frame, such as a combination of fixed and projected units
- Accessories available such as interior snap trim, pre-set panning, mullions, expanders, strap anchors, face flange adaptors, head/ jamb receptors and subsills
- Interior glazed design for ease of glass replacement

Our products feature a pour and debridge polyurethane thermal break for better performance, utilizing Azo-Brader™ technology with a 10-year pass-through warranty against failure of the polymer.

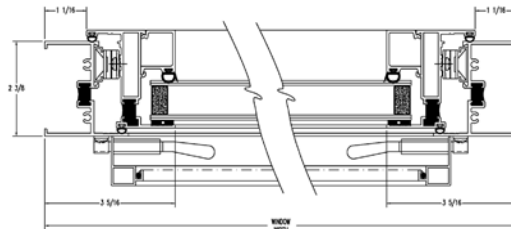
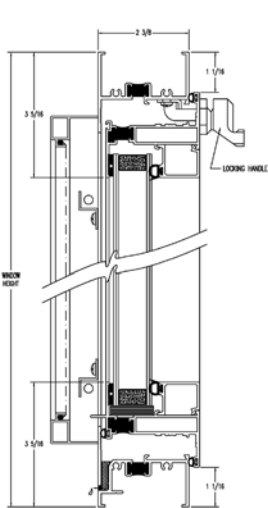


Azo-Brader™ Technology:
Abrasion "hooks" displace metal along the lugs to improve adhesion in the thermal barrier pocket.
(Azo-Brader™ is a trademark of Azon USA Inc.)

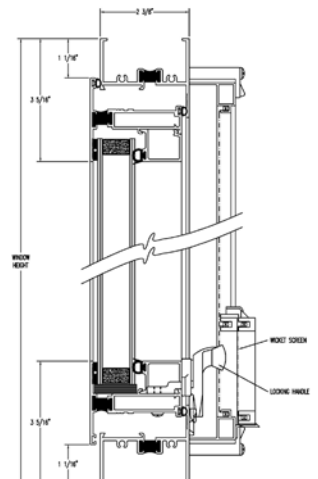
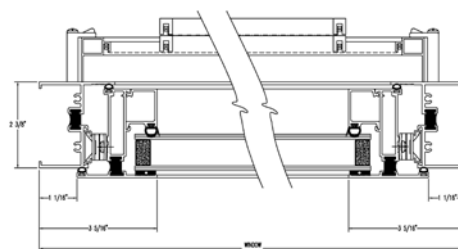
- 2 3/8" Frame Depth
- Electrostatically-applied baked-on polyester standard colors meet or exceed AAMA 2603 performance standards: Bronze, White
- Available high-performance fluoropolymer colors meet or exceed AAMA 2605 standards: White (70% Kynar®), Bronze (70% Kynar®) (Kynar® is a registered trademark of Arkema, Inc.)
- Available anodic coatings meet or exceed AAMA 611 performance standards: Clear or Bronze Anodized
- Non-standard colors available subject to minimum quantity requirements
- Optional stainless steel hardware packages are also available
- Blast-Resistant fixed and project-out models also available, call for details

Visit www.wojan.com
for the most current product
details, CAD drawings and
project photos

4500 Project-In



4600 Project-Out



HQ/Sales/Manufacturing
217 Stover Road
Charlevoix, MI 49720
fax (231) 547-4237

www.wojan.com
(800) 632-9827

Manufacturing
340 Jay Street
Coldwater, MI 49038
fax (517) 279-9832